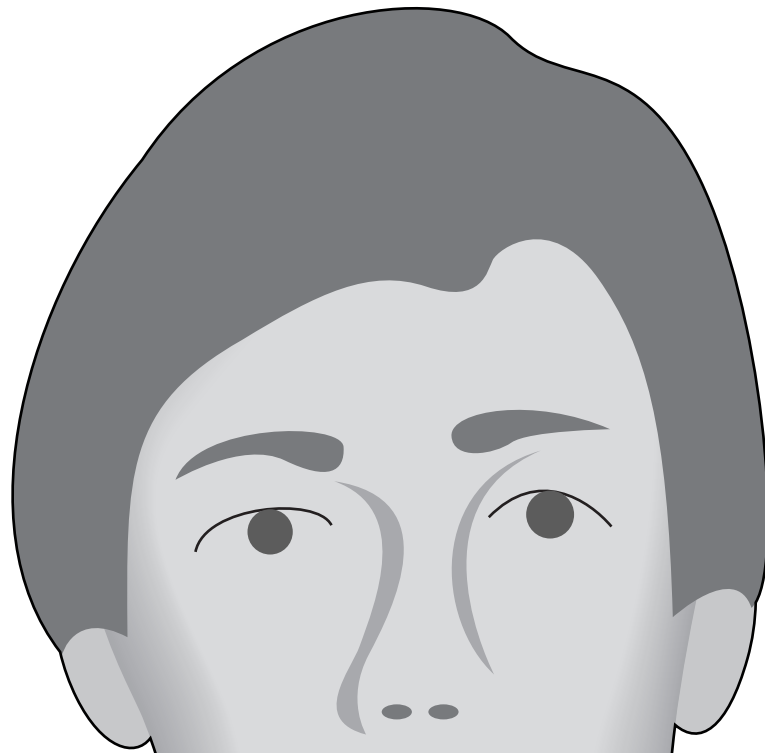


M
e S
c u
h m
a m
n a
i r
c y
s



Mouth

no fingers over lips

Side

Forward

1" forward

Side

in face plane
4" from centerline

Side Down

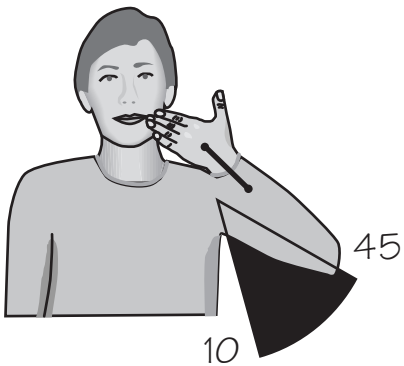
1/2-3/4" down

chin bottom
Adam's apple

Throat

below Adam's apple
above sternum

sternal notch



Posture

arm and wrist straight
hand and fingers flat
arm 10-45° from vertical

Pointer Finger

handshapes 1-7:
longest extended finger
handshape 8:
middle finger @ mouth & side
index finger @ throat & chin