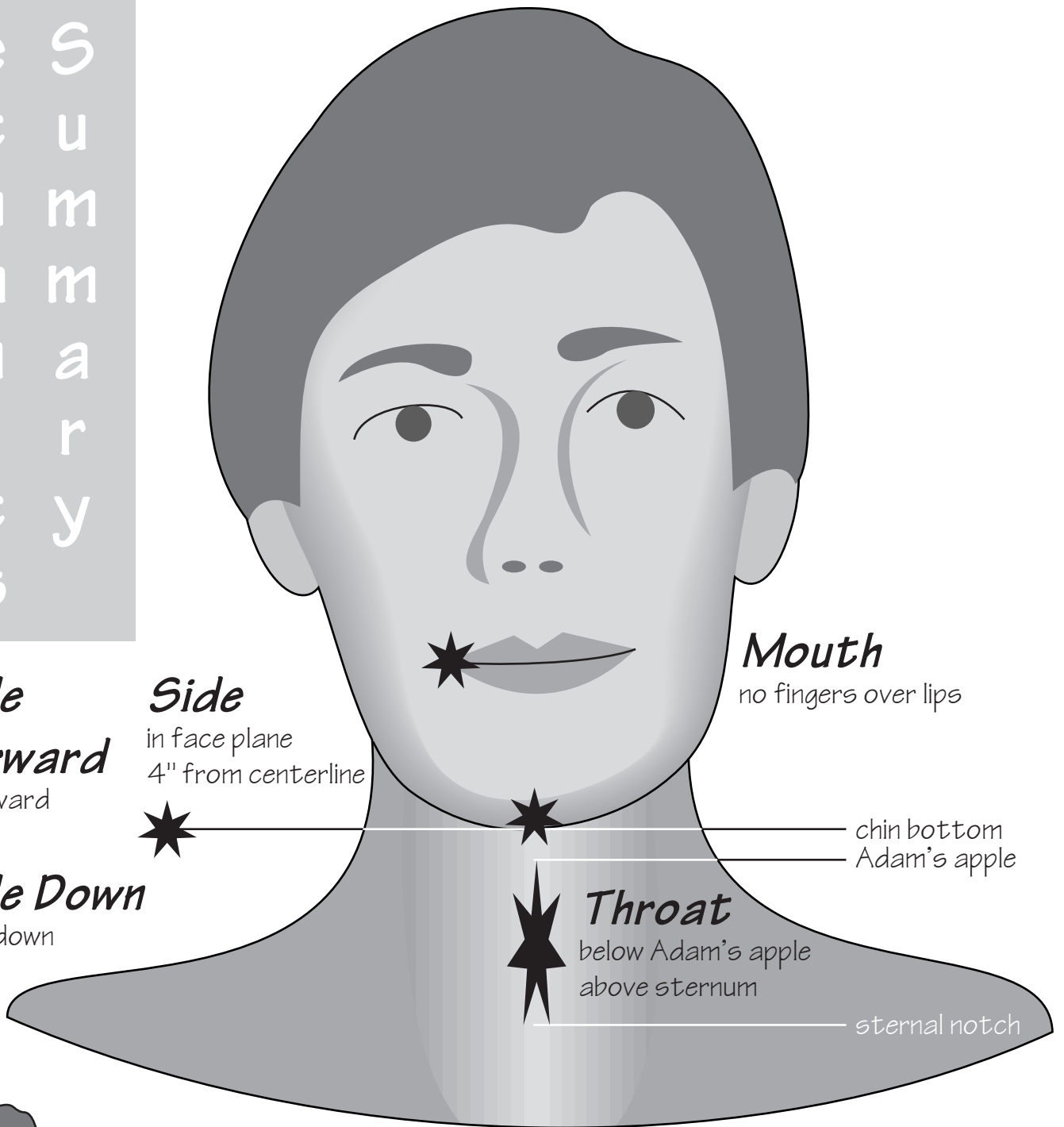


M  
e S  
c u  
h m  
a m  
n a  
i r  
c y  
s



**Mouth**

no fingers over lips

**Side**

**Forward**

1" forward

**Side**

in face plane  
4" from centerline

**Side Down**

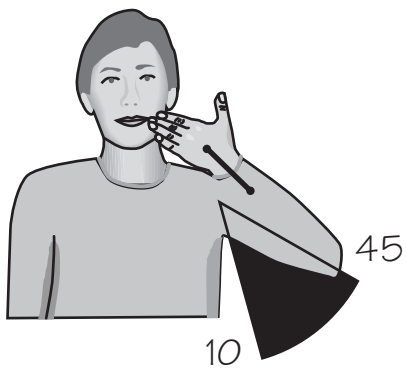
½-¾" down

chin bottom  
Adam's apple

**Throat**

below Adam's apple  
above sternum

sternal notch



**Posture**

arm and wrist straight  
hand and fingers flat  
arm 10-45° from vertical

**Contact Finger**

handshapes 1-7:  
longest extended finger  
handshape 8:  
middle finger @ mouth & side  
index finger @ throat & chin